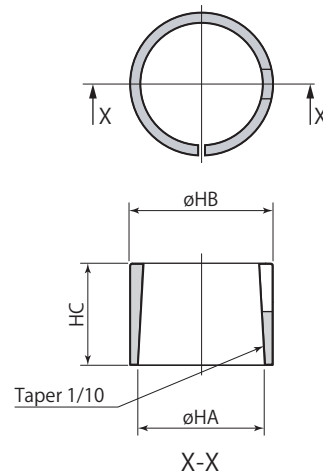


Specifications

Size	Option code	Description
<b>02</b>	<b>KS</b>	: Taper sleeve
<b>04</b>		
<b>06</b>	<b>KN</b>	: Perfect nut
<b>10</b>		
<b>16</b>	<b>KNR</b>	: Perfect release nut

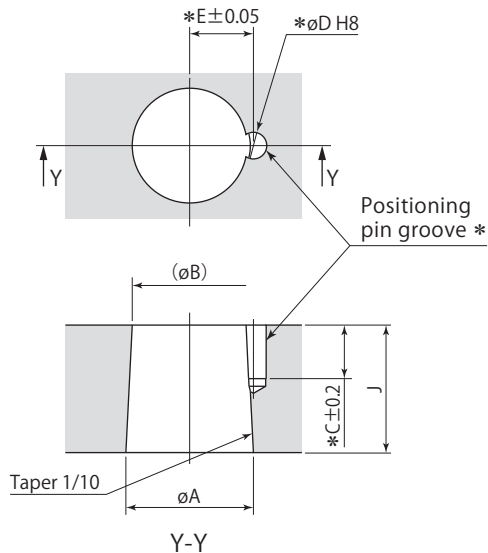
Taper sleeve and perfect release nut can not be combined.  
 ■ indicates made to order.

Taper sleeve

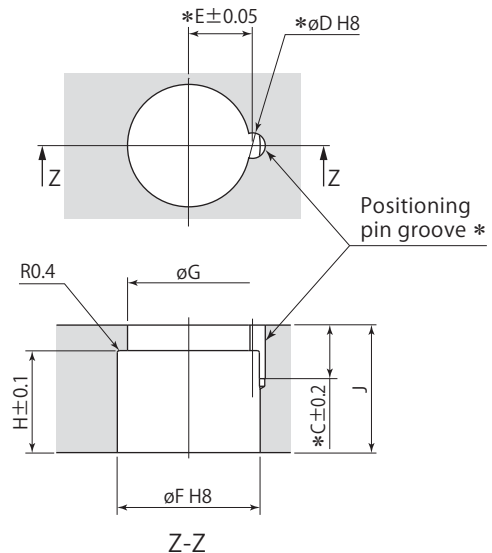


Clamp arm mounting details

Not using taper sleeve



Using taper sleeve



\*: No need to machine the pin groove (C,  $\phi D$ , E) unless positioning pin is used for the arm.  
 The positioning pin enables a clamp arm to locate on the clamp firmly and easily.

Taper sleeve	CTH02-KS	CTH04-KS	CTH06-KS	CTH10-KS	CTH16-KS
Applicable swing clamp	CTK02	CTK04	CTK06	CTK10	CTK16
$\phi HA$	12	16	20	25	32
$\phi HB$	14	18	22	28	36
HC	9.5	11	13	16	22
$\phi A$	12 <sup>-0.016</sup> <sub>-0.034</sub>	16 <sup>-0.016</sup> <sub>-0.034</sub>	20 <sup>-0.020</sup> <sub>-0.041</sub>	25 <sup>-0.020</sup> <sub>-0.041</sub>	32 <sup>-0.025</sup> <sub>-0.050</sub>
$\phi B$	10.8	14.6	18.4	23.1	29.5
C	6.5	8.5	10.5	12.5	12.5
$\phi D$ (pin groove diameter)	2.5 <sup>+0.014</sup> <sub>0</sub>	3 <sup>+0.014</sup> <sub>0</sub>	4 <sup>+0.018</sup> <sub>0</sub>	5 <sup>+0.018</sup> <sub>0</sub>	6 <sup>+0.018</sup> <sub>0</sub>
E	6.05	8.1	10.1	12.6	16.1
$\phi F$	14 <sup>+0.027</sup> <sub>0</sub>	18 <sup>+0.027</sup> <sub>0</sub>	22 <sup>+0.033</sup> <sub>0</sub>	28 <sup>+0.033</sup> <sub>0</sub>	36 <sup>+0.039</sup> <sub>0</sub>
$\phi G$	11.5	15	19	23.5	30
H	9.5	11	13	16	22
J	12	14	16	19	25

mm