

Quick arm change



- Clamp arm is replaceable quickly.

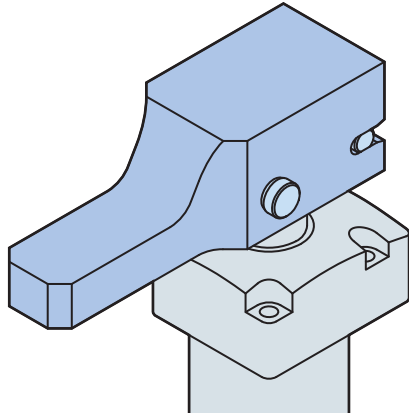
Toolless



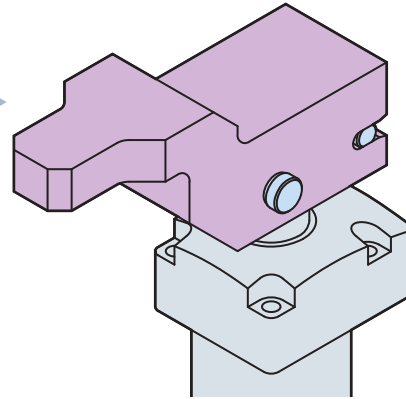
- No specific tools are required to replace, simply place the arm and put the pin in.

Jig cost is reduced

- The arm makes the clamp versatile for many kinds of the workpiece and overall Jig cost is reduced.

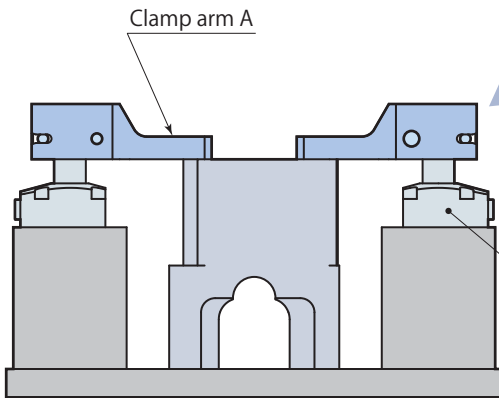


Replace clamp arm

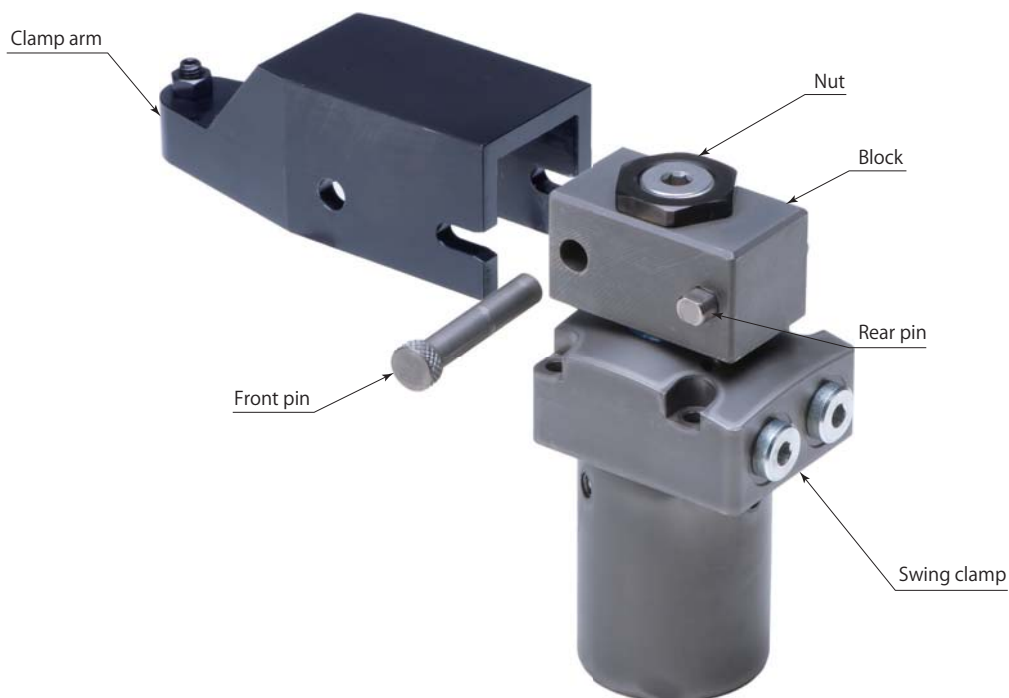
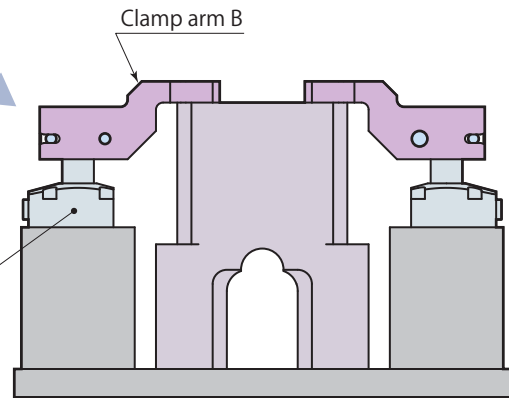


Productivity improved

- The introduction of the arm enable the jig to be exchanged very quick and to reduce the set-up time, which ends up the increase of productivity.

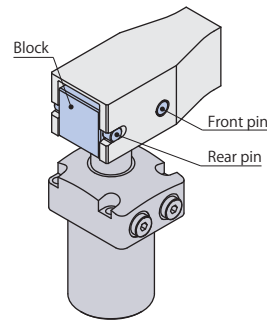


Replace clamp arm

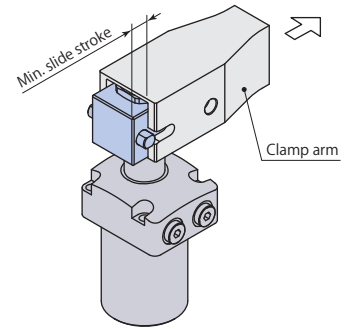


Quick arm change

| | |
|------|-----------------------------------|
| Size | |
| 02 | |
| 04 | |
| 06 | - CQ : Quick arm change |
| 10 | |
| 16 | ■ indicates made to order. |



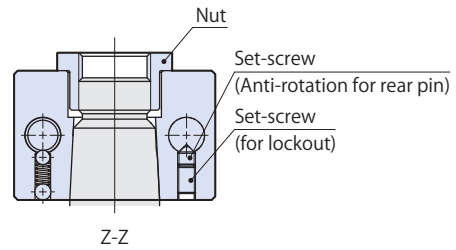
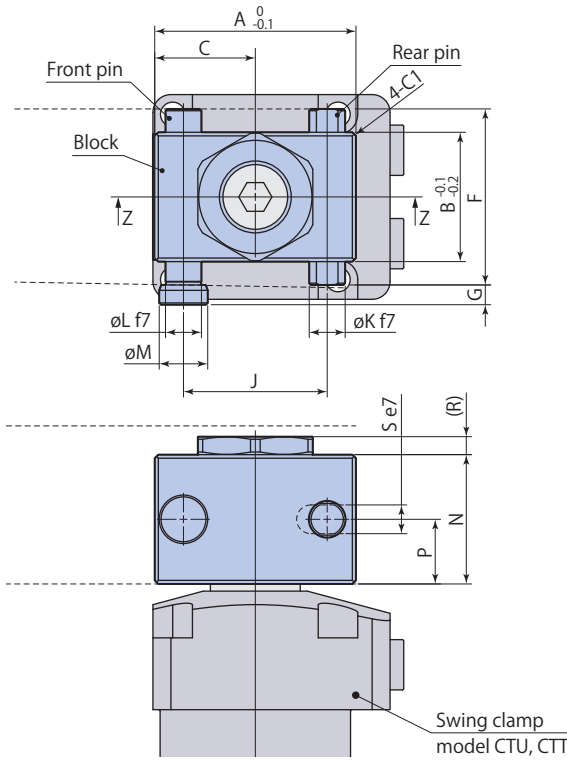
Clamp arm mounting



Clamp arm dismounting

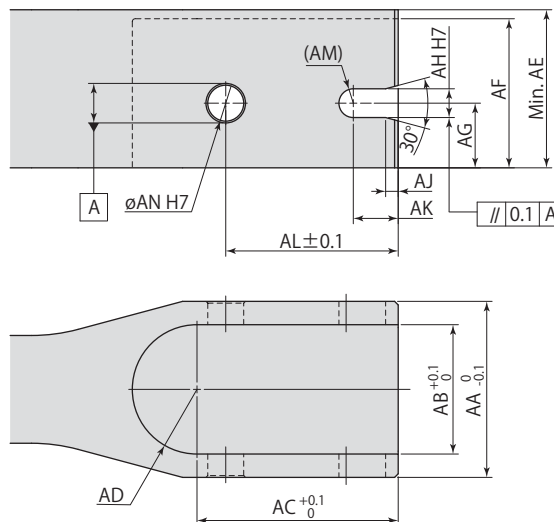
Pull the pin out and slide the clamp arm to the front of the clamp so the arm can be removed.

Dimensions



Clamp arm mounting details

Recommended material: S45C (HB201-269)



| CTH□-CQ | Quick arm change | Option |
|---------|------------------|--------|
|---------|------------------|--------|

| Quick arm change | CTH02-CQ | CTH04-CQ | CTH06-CQ | CTH10-CQ | CTH16-CQ |
|------------------------|--------------------------------|--------------------------------|---------------------------------|---------------------------------|---------------------------------|
| Applicable swing clamp | CTU02 CTT02 | CTU04 CTT04 | CTU06 CTT06 | CTU10 CTT10 | CTU16 CTT16 |
| A | 45 | 54 | 57 | 66 | 76 |
| B | 25 | 30.5 | 33.5 | 40.5 | 51.5 |
| C | 22.5 | 27 | 28.5 | 33 | 38 |
| F | 35 | 42 | 46 | 55.5 | 70 |
| G | 5.5 | 5.5 | 5.5 | 7.5 | 9 |
| J | 32 | 38 | 38 | 46 | 56 |
| ∅K | 6 ^{-0.011 -0.022} | 8 ^{-0.013 -0.028} | 10 ^{-0.013 -0.028} | 12 ^{-0.016 -0.034} | 14 ^{-0.016 -0.034} |
| ∅L | 6 ^{-0.011 -0.022} | 8 ^{-0.013 -0.028} | 10 ^{-0.013 -0.028} | 12 ^{-0.016 -0.034} | 14 ^{-0.016 -0.034} |
| ∅M | 9.5 | 11.5 | 13.5 | 16 | 18 |
| N | 22 | 29 | 32 | 36 | 40 |
| P | 11 | 14.5 | 16 | 18 | 20 |
| R | 6 | 5 | 5 | 7 | 7 |
| S (width across flats) | 5 ^{-0.020 -0.032} | 6 ^{-0.020 -0.032} | 8 ^{-0.025 -0.040} | 10 ^{-0.025 -0.040} | 12 ^{-0.032 -0.050} |
| Min. slide stroke | 9.5 | 12 | 14.5 | 16 | 17 |

- Refer to **pages →7–23** for model CTU, **29–37** for model CTT for other specifications and dimensions that are not shown in the diagram.
- Refer to performance table (model CTU **page →8**, model CTT **page →30**) for the relation between hydraulic force and clamp arm length.
- A nut, block, front pin and a rear pin are included.
- Customers must arrange for the clamp arm.

| Quick arm change | CTH02-CQ | CTH04-CQ | CTH06-CQ | CTH10-CQ | CTH16-CQ |
|------------------------|---------------------------|---------------------------|----------------------------|----------------------------|----------------------------|
| Applicable swing clamp | CTU02 CTT02 | CTU04 CTT04 | CTU06 CTT06 | CTU10 CTT10 | CTU16 CTT16 |
| AA | 35 | 42 | 46 | 55.5 | 70 |
| AB | 25 | 30.5 | 33.5 | 40.5 | 51.5 |
| AC | 45 | 54 | 57 | 66 | 76 |
| AD | R12.5 | R15.25 | R16.75 | R20.25 | R25.75 |
| AE | 33 | 39 | 42 | 48 | 52 |
| AF | 29 | 35 | 38 | 44 | 48 |
| AG | 11 | 14.5 | 16 | 18 | 20 |
| AH | 5 ^{+0.012 0} | 6 ^{+0.012 0} | 8 ^{+0.015 0} | 10 ^{+0.015 0} | 12 ^{+0.018 0} |
| AJ | 2.5 | 3 | 3.5 | 5 | 5 |
| AK | 8.5 | 11 | 13 | 14 | 14 |
| AL | 38.5 | 46 | 47.5 | 56 | 66 |
| AM | R2.5 | R3 | R4 | R5 | R6 |
| ∅AN | 6 ^{+0.012 0} | 8 ^{+0.015 0} | 10 ^{+0.015 0} | 12 ^{+0.018 0} | 14 ^{+0.018 0} |