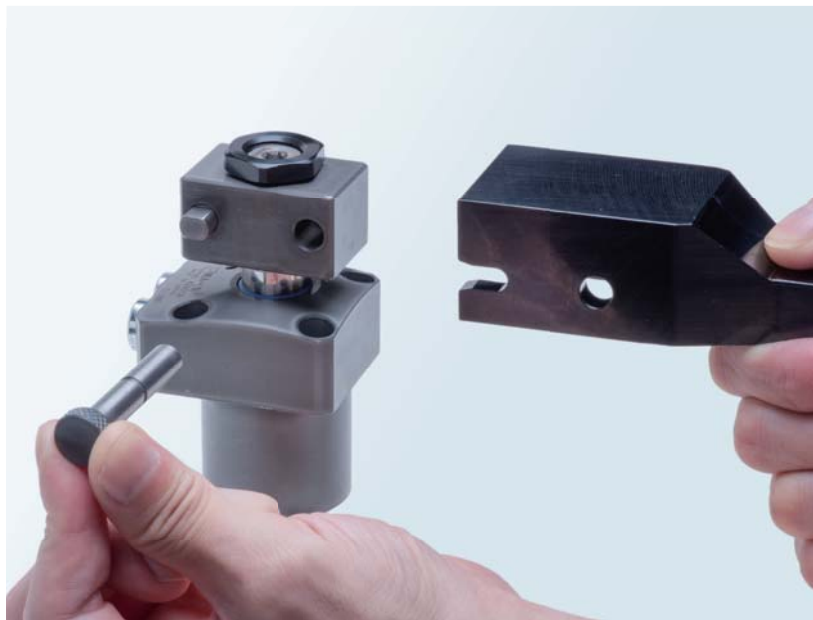


Quick arm change



- Clamp arm is replaceable quickly.

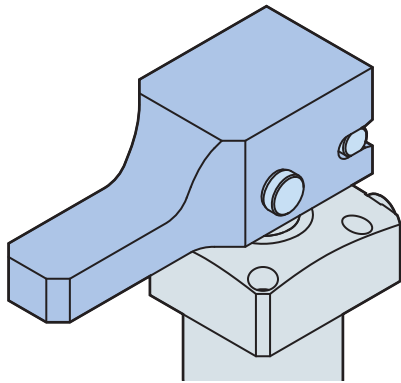
Toolless



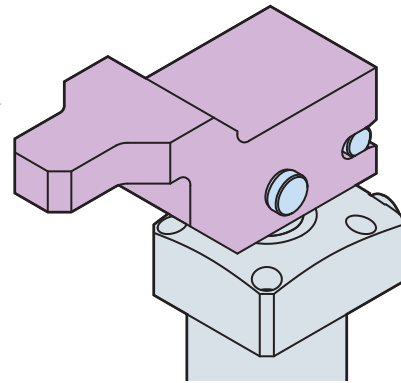
- No specific tools are required to replace, simply place the arm and put the pin in.

Jig cost is reduced

- The arm makes the clamp versatile for many kinds of the workpiece and overall Jig cost is reduced.

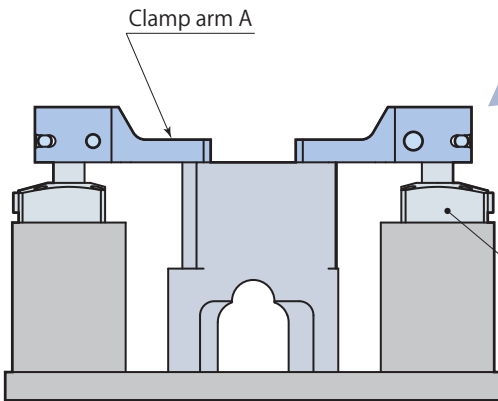


Replace clamp arm

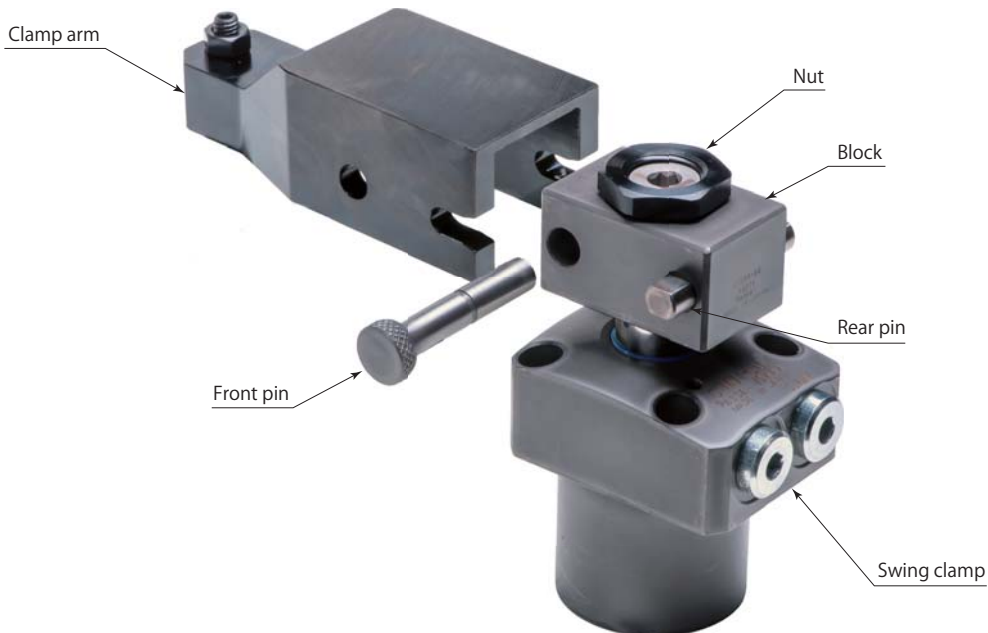
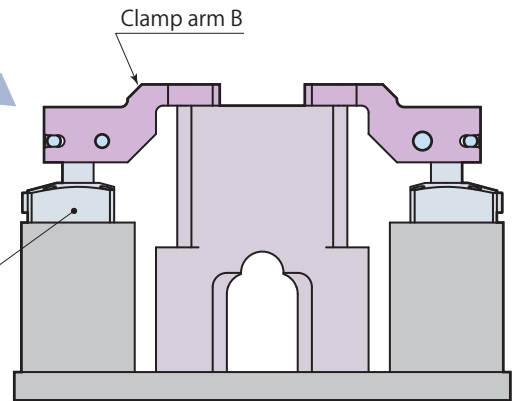


Productivity improved

- The introduction of the arm enable the jig to be exchanged very quick and to reduce the set-up time, which ends up the increase of productivity.

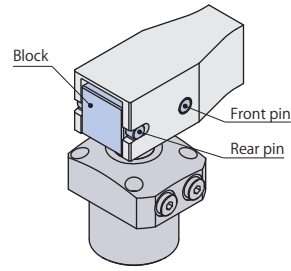


Replace clamp arm

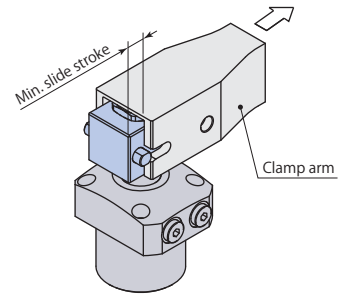


Quick arm change

Size	
04	
05	
06	- BQ : Quick arm change
10	
16	■ indicates made to order.



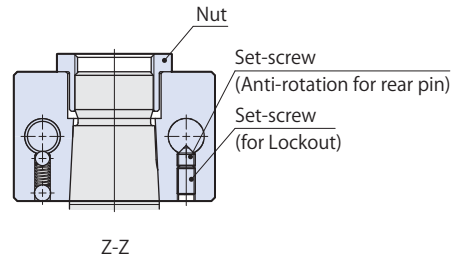
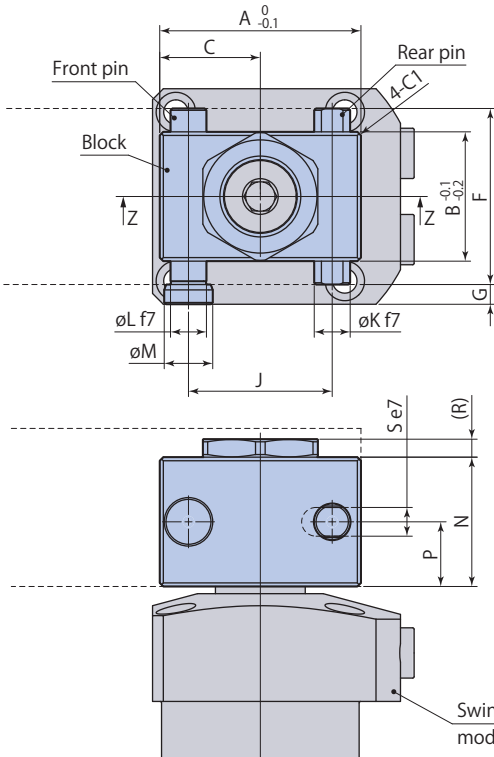
Clamp arm mounting



Clamp arm dismounting

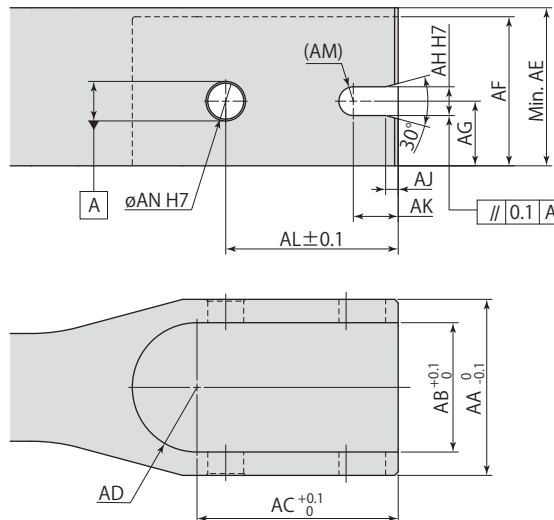
Pull the pin out and slide the clamp arm to the front of the clamp so the arm can be removed.

Dimensions



Clamp arm mounting details

Recommended material: S45C (HB201-269)



CTH□-BQ	Quick arm change	Option
---------	------------------	--------

Quick arm change	CTH04-BQ	CTH05-BQ	CTH06-BQ	CTH10-BQ	CTH16-BQ
Applicable swing clamp	CTM04	CTM05	CTM06	CTM10	CTM16
A	42	48	56	67	80
B	27	33.5	36	45.5	50.5
C	21	24	28	33.5	40
F	40	45	49	59	72
G	5.5	5.5	5.5	5.5	9
J	29	34	40	50	56
∅K	8 ^{-0.013} _{-0.028}	10 ^{-0.013} _{-0.028}	10 ^{-0.013} _{-0.028}	10 ^{-0.013} _{-0.028}	16 ^{-0.016} _{-0.034}
∅L	8 ^{-0.013} _{-0.028}	10 ^{-0.013} _{-0.028}	10 ^{-0.013} _{-0.028}	10 ^{-0.013} _{-0.028}	16 ^{-0.016} _{-0.034}
∅M	11.5	13.5	13.5	13.5	21
N	23	30	36	36	50
P	11.5	15	18	18	25
R	5	5	5	5	7
S (width across flats)	6 ^{-0.020} _{-0.032}	8 ^{-0.025} _{-0.040}	8 ^{-0.025} _{-0.040}	8 ^{-0.025} _{-0.040}	14 ^{-0.032} _{-0.050}
Min. slide stroke	10.5	12	13	13.5	20

- Refer to **pages →12–67** for model CTM for other specifications and dimensions that are not shown in the diagram.
- Refer to performance table (**pages →14, 15**) for the relation between hydraulic force and clamp arm length.
- A nut, block, front pin and a rear pin are included.
- Customers must arrange for the clamp arm.

Quick arm change	CTH04-BQ	CTH05-BQ	CTH06-BQ	CTH10-BQ	CTH16-BQ
Applicable swing clamp	CTM04	CTM05	CTM06	CTM10	CTM16
AA	40	45	49	59	72
AB	27	33.5	36	45.5	50.5
AC	42	48	56	67	80
AD	R13.5	R16.75	R18	R22.75	R25.25
AE	32	39	44	44	62
AF	29	36	41.5	41.5	58
AG	11.5	15	18	18	25
AH	6 ^{+0.012} ₀	8 ^{+0.015} ₀	8 ^{+0.015} ₀	8 ^{+0.015} ₀	14 ^{+0.018} ₀
AJ	2.5	3	3.5	4	6
AK	9.5	10.5	11.5	12	16.5
AL	35.5	41	48	58.5	68
AM	R3	R4	R4	R4	R7
∅AN	8 ^{+0.015} ₀	10 ^{+0.015} ₀	10 ^{+0.015} ₀	10 ^{+0.015} ₀	16 ^{+0.018} ₀