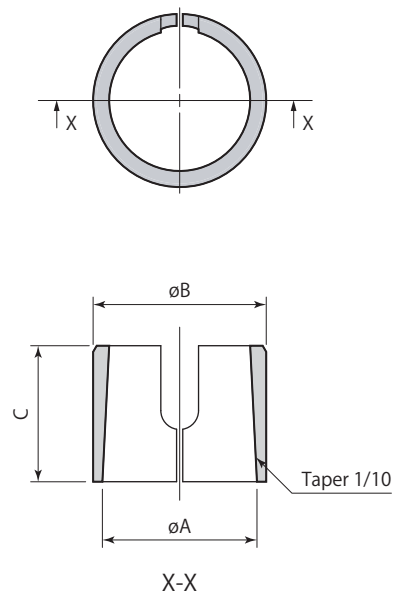
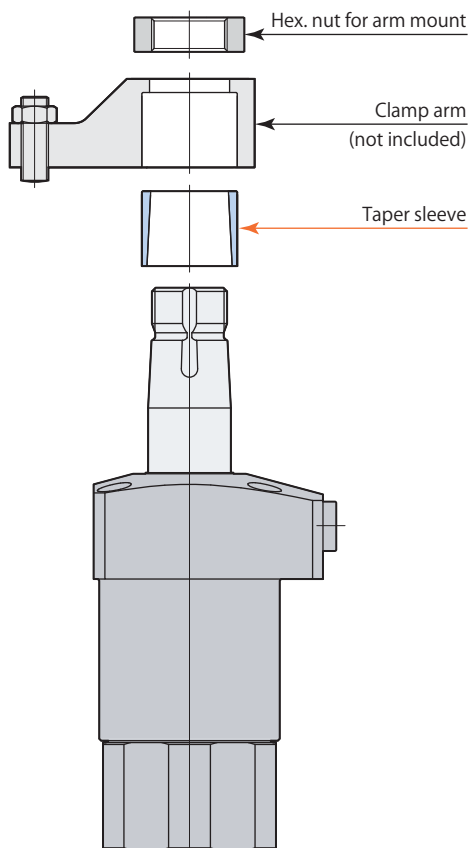


Taper sleeve



Size

CTH 04 05 06 — MS : Taper sleeve



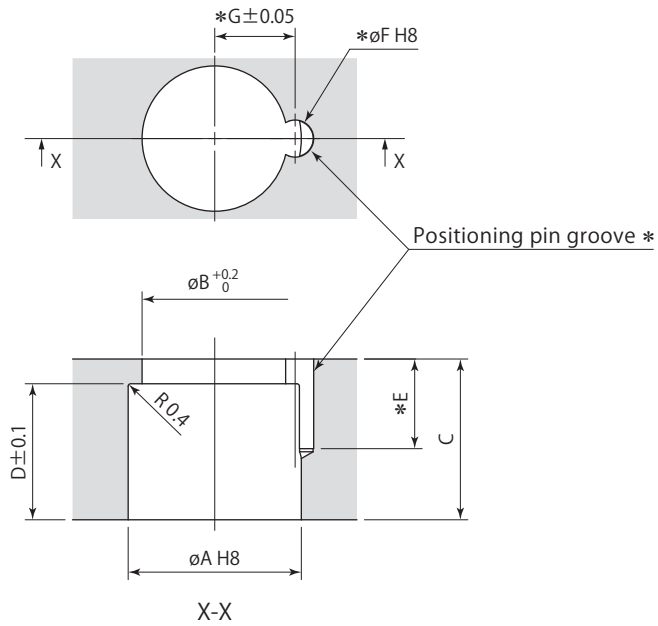
Taper sleeve	CTH04-MS	CTH05-MS	CTH06-MS
Applicable swing clamp	CTP04-□	CTP05-□	CTP06-□
$\phi A$	18	22	25
$\phi B$	20	25	28
C	16	19	22

mm

Clamp arm mounting details

(Using taper sleeve)

Clamp arm is not included. Manufacture a clamp arm with the dimensions shown in the table below.



\* : No need to machine the pin groove (E,  $\phi F$ , G) unless positioning pin is used for the arm.  
The positioning pin enables a clamp arm to locate on the clamp firmly and easily.

Taper sleeve	CTH04-MS	CTH05-MS	CTH06-MS
Applicable swing clamp	CTP04-□	CTP05-□	CTP06-□
$\phi A$	20 $^{+0.033}_0$	25 $^{+0.033}_0$	28 $^{+0.033}_0$
$\phi B$	17	21	23.5
C	19	23	26
D	16	19	22
E	10.5	12.5	14.5
$\phi F$ (pin groove diameter)	4 $^{+0.018}_0$	5 $^{+0.018}_0$	6 $^{+0.018}_0$
G	9	11.5	13

mm