

Flange

Flange model CSP□-F

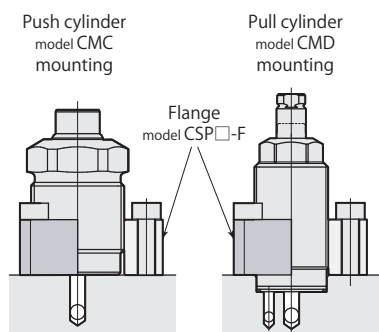


CSP	Size			- F : Flange
	016	036	065	
	022	048	070	
	025	055	080	
	030	058		

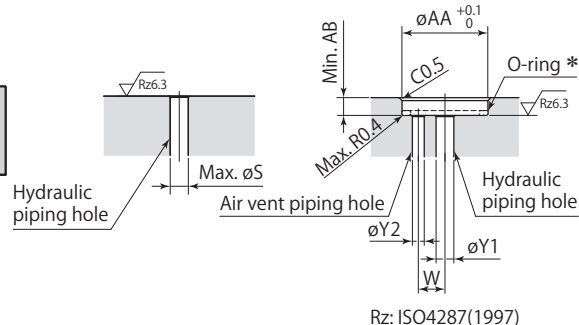
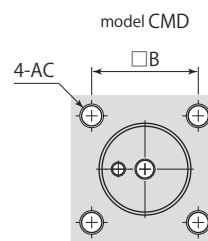
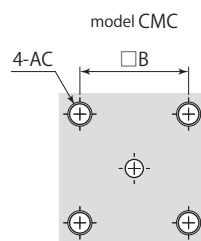
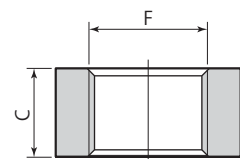
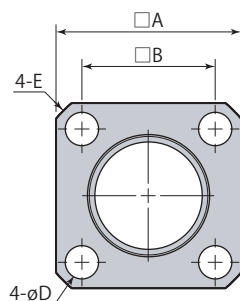
■ indicates made to order.

Model	CSP016-F	CSP022-F	CSP025-F	CSP030-F	CSP036-F	CSP048-F	CSP055-F	CSP058-F	CSP065-F	CSP070-F	CSP080-F
Push cylinder	CMC01	CMC03	CMC04	CMC06	CMC10	CMC20	CMC25		CMC40		CMC60
Pull cylinder		CMD02	CMD04	CMD06	CMD10	CMD20		CMD40		CMD50	CMD80

Mounting details



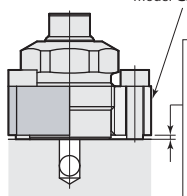
①Mount a flange with screws. ②Screw the cylinder in the flange.



Rz: ISO4287(1997)

\*: Install O-ring in the same way even when a flange is used for mounting. The O-ring is included in the package of the pull cylinder.

Push cylinder model CMC□-5 mounting



\*: When using the flange with model CMC03-5, CMC04-5, CMC06-5 or CMC10-5.  
 ①Mount model CMC onto the flange.  
 ②Tighten the mounting screws.  
 (providing a clearance between the flange and the mounting surface)

Model	CSP016-F	CSP022-F	CSP025-F	CSP030-F	CSP036-F	CSP048-F	CSP055-F	CSP058-F	CSP065-F	CSP070-F	CSP080-F
A	25	30	35	40	50	65	70	70	80	85	90
B	18	23	26	31	40	48	54	54	62	65	72
C	12	12	14	16	16	20	24	20	25	25	25
øD	4.5	4.5	5.5	5.5	6.8	11	11	11	14	14	14
E	C2	C2	C3	C3	C3	C5	C5	C5	C5	C5	C5
F	M16×1.5	M22×1.5	M25×1.5	M30×1.5	M36×1.5	M48×1.5	M55×2.0	M58×1.5	M65×2.0	M70×2.0	M80×2.0
øS	5	8	10	14	19	26	34	-	44	-	56
W	-	7	7.5	9.5	12	15	-	18	-	19-21	19.5-26.5
øY1	-	3	3	3	4	6	-	6	-	6	6
øY2	-	3	3	3	3	3	-	3	-	6	6
øAA	-	20.5	23.5	28.5	34.5	46.5	-	56.5	-	68	78
AB	-	3	3	3	3	3	-	4	-	4	4
AC	M4	M4	M5	M5	M6	M10	M10	M10	M12	M12	M12
Mass	0.04 kg	0.05 kg	0.08 kg	0.11 kg	0.18 kg	0.33 kg	0.43 kg	0.31 kg	0.52 kg	0.58 kg	0.53 kg

● Mounting screws are not included.

● Refer to dimension of individual products for dimensions that are not listed in the diagram.

Piping block

Size

- 016** : CMC01
- 022** : CMC03
- 025** : CMC04
- 030** : CMC06
- 036** : CMC10
- 048** : CMC20
- 055** : CMC25
- 065** : CMC40
- 080** : CMC60

CMH **036** — **C** : Piping block

■ indicates made to order.



Push cylinder model CMC□

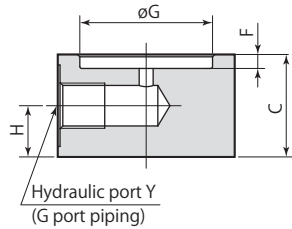
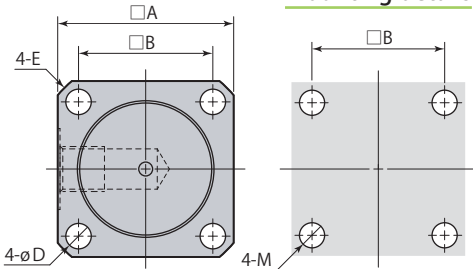
Push cylinder model CMC mounting

Push cylinder model CMC□-5 mounting

Flange model CSP□-F

Piping block model CMH□-C

Mounting details



- ①Mount a piping block and a flange with screws.
- ②Screw the cylinder model CMC in the flange.

\*: When using the flange with model CMC03-5, CMC04-5, CMC06-5 or CMC10-5.  
①Mount model CMC onto the flange. ②Tighten the mounting screws. (providing a clearance between the flange and the piping block)

Model	CMH016-C	CMH022-C	CMH025-C	CMH030-C	CMH036-C	CMH048-C	CMH055-C	CMH065-C	CMH080-C
A	25	30	35	40	50	65	70	80	90
B	18	23	26	31	40	48	54	62	72
C	19	19	19	22	22	25	25	25	28
øD	4.5	4.5	5.5	5.5	6.8	11	11	14	14
E	C2	C2	C3	C3	C3	C5	C5	C5	C5
F	1.5	3	3	3	3	4	4	4	4
øG	14.5	20.5	23.5	28.5	34.5	46.5	53	63	78
H	9.5	9.5	9.5	11	11	12.5	12.5	12.5	14
M	M4	M4	M5	M5	M6	M10	M10	M12	M12
Y	G1/8	G1/8	G1/8	G1/8	G1/8	G1/4	G1/4	G1/4	G1/4
Mass	0.07 kg	0.11 kg	0.15 kg	0.23 kg	0.38 kg	0.67 kg	0.79 kg	1.01 kg	1.47 kg

mm

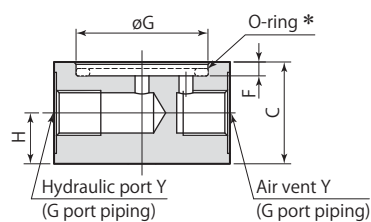
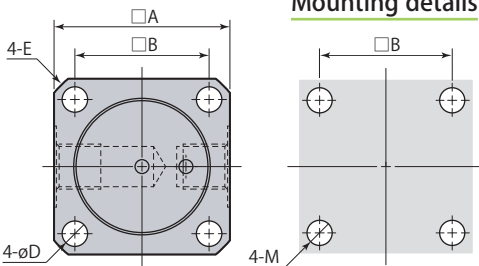


Pull cylinder model CMD□

Flange model CSP□-F

Piping block model CMH□-D

Mounting details



- ①Mount a piping block and a flange with screws.
- ②Screw the cylinder model CMD in the flange.

■ indicates made to order.

CMH **036** — **D** : Piping block

Size

- 022** : CMD02
- 025** : CMD04
- 030** : CMD06
- 036** : CMD10
- 048** : CMD20
- 058** : CMD40
- 070** : CMD50
- 080** : CMD80

mm

Model	CMH022-D	CMH025-D	CMH030-D	CMH036-D	CMH048-D	CMH058-D	CMH070-D	CMH080-D
A	30	35	40	50	65	70	85	90
B	23	26	31	40	48	54	65	72
C	19	19	22	22	25	25	28	28
øD	4.5	5.5	5.5	6.8	11	11	14	14
E	C2	C3	C3	C3	C5	C5	C5	C5
F	3	3	3	3	4	4	4	4
øG	20.5	23.5	28.5	34.5	46.5	56.5	68	78
H	9.5	9.5	11	11	12.5	12.5	14	14
M	M4	M5	M5	M6	M10	M10	M12	M12
Y	G1/8	G1/8	G1/8	G1/8	G1/4	G1/4	G1/4	G1/4
Mass	0.1 kg	0.14 kg	0.23 kg	0.37 kg	0.65 kg	0.76 kg	1.28 kg	1.44 kg

\*: Install O-ring in the same way even when a piping block is used for mounting. The O-ring is included in the package of the pull cylinder.