

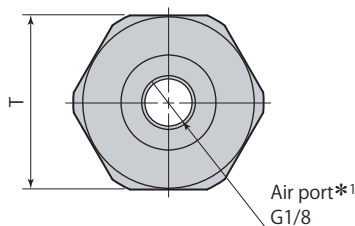
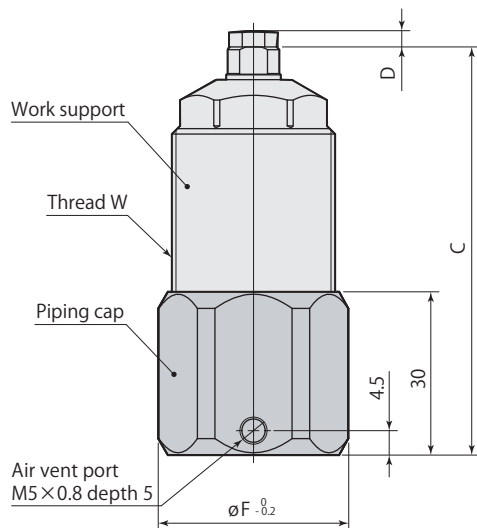
Piping cap

Size

005 : CSS005, CSX005**00** : CSS00, CSX00**CSP** **(Nil)** : CSS01, CSX01 — **C** : Piping cap**02** : CSS02, CSX02**06** : CSS04, CSX04

Work support	CSS005 CSX005	CSS00 CSX00	CSS01 CSX01	CSS02 CSX02	CSS04 CSX04	CSS05 CSX05
Piping cap	CSP005-C	CSP00-C	CSP-C	CSP02-C	CSP06-C	(*)

*: Connect model CSS05 and model CSX05 directly as a port is available on body. (For details about thread size and connecting position, please refer to [page →118](#) for model CSS, [page →122](#) for model CSX.)



Model	mm				
	CSP005-C	CSP00-C	CSP-C	CSP02-C	CSP06-C
C*2	61.5	68	75	79	92
D	2.5	3	3	3	4
øF	32	32	35	45	54
T (width across flats)	29	29	32	41	50
W	M22×1.5	M26×1.5	M30×1.5	M36×1.5	M45×1.5

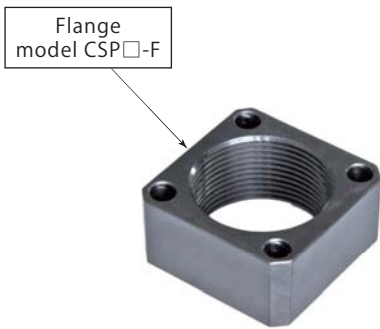
*1: Use one-touch fittings manufactured by SMC for G port piping. (See SMC catalog for the details of the fitting.)

*2: Stroke length to be added on C dimension when mounting on model CSX.

Install O-ring in the same way even when a piping cap is used for mounting.

The O-ring is included in the package of the work support.

Flange



Use a mounting flange when installing with screws.

CSP

Size

022 : CSS005, CSX005

026 : CSS00, CSX00

030 : CSS01, CSX01

036 : CSS02, CSX02

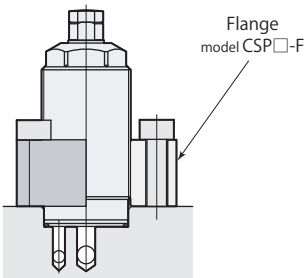
045 : CSS04, CSX04

055 : CSS05, CSX05

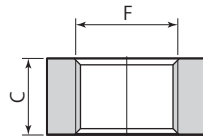
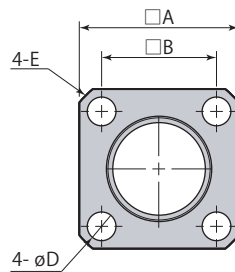
— **F** : Flange



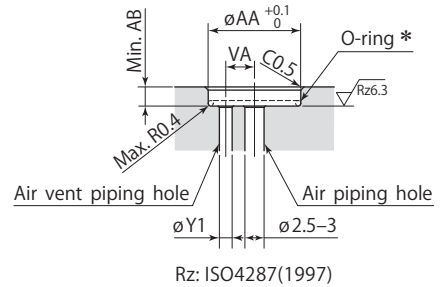
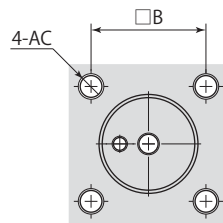
Work support model CSS, CSX mounting



Dimensions



Mounting details



*: Install O-ring in the same way even when a flange is used for mounting.

The O-ring is included in the package of the work support.

● Mounting screws are not included.

● Refer to **pages →118** for model CSS, **122** for model CSX for the dimensions of products that are not listed on this page.

- ①Mount a flange with screws.
- ②Screw the work support in the flange.

Model	CSP022-F	CSP026-F	CSP030-F	CSP036-F	CSP045-F	CSP055-F
A	30	35	40	50	55	70
B	23	26	31	40	42	54
C	12	17	16	16	18	24
ϕD	4.5	5.5	5.5	6.8	9	11
E	C2	C3	C3	C3	C4	C5
F	M22×1.5	M26×1.5	M30×1.5	M36×1.5	M45×1.5	M55×2.0
$\phi Y1$	2	2.5-3	2.5-3	2.5-3	2.5-3	2.5-3
ϕAA	20.5	24.5	28.5	34.5	43.5	53
AB	3	3	3	3	3	3
AC	M4	M5	M5	M6	M8	M10
VA	7	9	11	13	15	21
Mass	0.05 kg	0.09 kg	0.11 kg	0.18 kg	0.18 kg	0.43 kg

Piping block

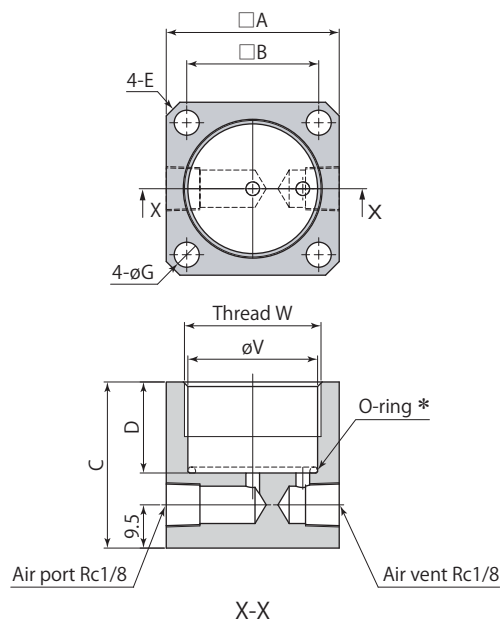


Size	
022	: CSS005, CSX005
026	: CSS00, CSX00
030	: CSS01, CSX01
036	: CSS02, CSX02
045	: CSS04, CSX04
055	: CSS05, CSX05

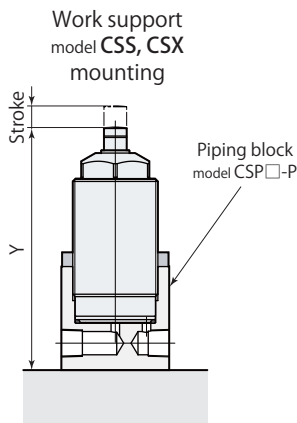
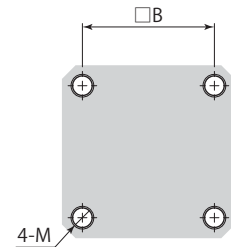
CSP

— **P** : Piping block

Dimensions



Mounting details



* : Install O-ring in the same way even when a piping block is used for mounting. The O-ring is included in the package of the work support.

- Mounting screws are not included.
- Provide the piping if there is a risk of coolant or metal chips intrusion from air vent.
- Refer to **pages →118** for model CSS, **122** for model CSX for the dimensions of products that are not listed on this page.

Model	CSP022-P	CSP026-P	CSP030-P	CSP036-P	CSP045-P	CSP055-P
A	28	35	38	45	55	70
B	21	26	29	35	42	54
C	35.5	36.5	36.5	36.5	36.5	43.5
D	19	20	20	20	20	27
E	C2	C3	C3	C3	C4	C5
øG	4.5	5.5	5.5	6.8	9	11
M	M4	M5	M5	M6	M8	M10
øV	20.5	24.5	28.5	34.5	43.5	53
W	M22×1.5	M26×1.5	M30×1.5	M36×1.5	M45×1.5	M55×2
Y*	70.5	78.5	85.5	89.5	103.5	106.5
Stroke	6.5	6.5	6.5	8	8	8
Mass	0.14 kg	0.23 kg	0.27 kg	0.37 kg	0.53 kg	1.03 kg

* : Stroke length to be added on Y dimension when mounting on model CSX.