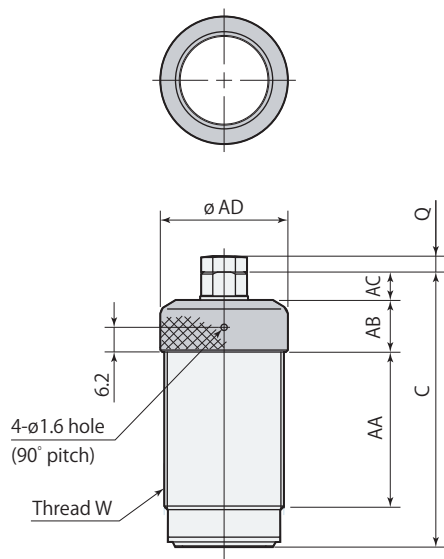


Specifications

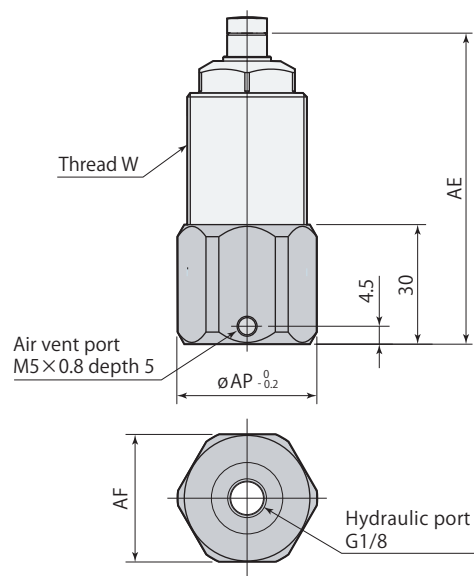
	Size		
<b>CSP</b>	<b>00</b>	: CS □ 00	—
	<b>(Nil)</b>	: CS □ 01, 03	
	<b>02</b>	: CS □ 04	
	<b>06</b>	: CS □ 06	
		<b>A</b>	: Chip cover*
		<b>C</b>	: Piping cap

\*: To be used as a protection cover for hexagonal part of upper part against accumulation of metal chips.

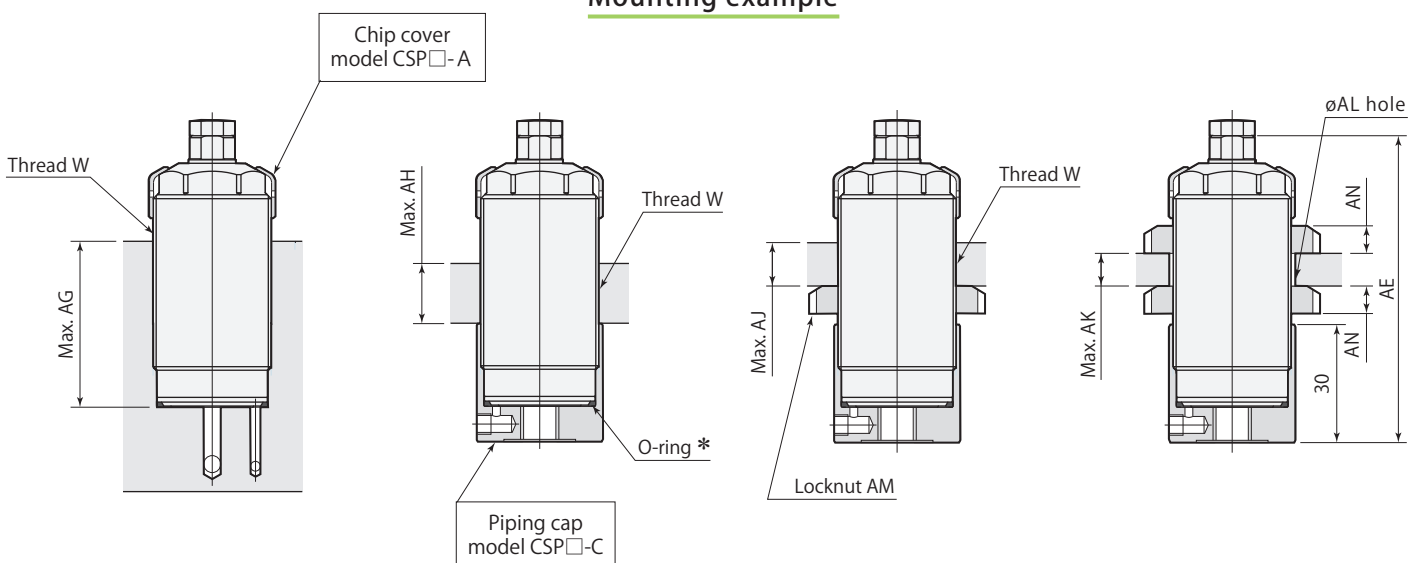
Chip cover



Piping cap



Mounting example



\*: Install O-ring in the same way even when a piping cap is used for mounting. The O-ring is included in the package of the work support.

<b>CSP</b> □-□	<b>Chip cover, Piping cap</b>	<b>Option</b>
----------------	-------------------------------	---------------

mm

Chip cover	CSP00-A	CSP-A		CSP02-A	CSP06-A
Work support	CS□00-□	CS□01-□	CS□03-□	CS□04-□	CS□06-□
C*	63	48	69	65	78
Q	3	4	4	4	4
W	M26×1.5	M30×1.5	M30×1.5	M36×1.5	M45×1.5
AA	33.7	16.7	37.7	31.7	42.4
AB	13	13	13	15	16
AC	7	8	8	8	9.3
∅AD	28	32	32	38	47

\*: Stroke length to be added on C dimension when mounting on model CSK.

mm

Piping cap	CSP00-C	CSP-C		CSP02-C	CSP06-C
Work support	CS□00-□	CS□01-□	CS□03-□	CS□04-□	CS□06-□
W	M26×1.5	M30×1.5	M30×1.5	M36×1.5	M45×1.5
AE*	72	57	78	74	87
AF (width across flats)	29	32	32	41	50
∅AP	32	35	35	45	54

\*: Stroke length to be added on AE dimension when mounting on model CSK.

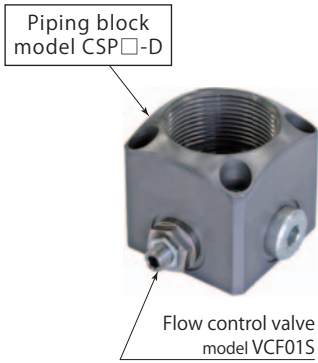
mm

Chip cover	CSP00-A	CSP-A		CSP02-A	CSP06-A
Piping cap	CSP00-C	CSP-C		CSP02-C	CSP06-C
Work support	CS□00-□	CS□01-□	CS□03-□	CS□04-□	CS□06-□
W	M26×1.5	M30×1.5	M30×1.5	M36×1.5	M45×1.5
AE*	72	57	78	74	87
AG	48	32	53	47	58
AH	26	11	31	25	36
AJ	-	-	24	-	26
AK	-	-	17	-	16
∅AL	-	-	30.5	-	45.5
AM	-	-	AN06	-	AN09
AN	-	-	7	-	10

\*: Stroke length to be added on AE dimension when mounting on model CSK.

● The dimensions of AG, AH, AJ and AK are reduced by 6 mm when chip cover is used.

● Locknut AM is not included.

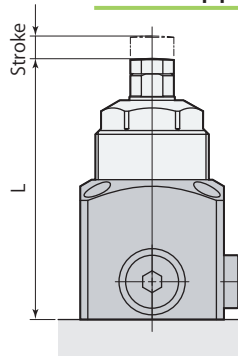


Plunger lifting operation time can be individually adjusted for work support model CSN & CSY, by using optional piping block model CSP-D and flow control valve model VCF01S.

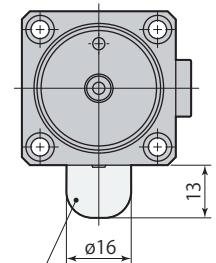
**Piping block**

	Size	
	<b>00</b>	: CS □ 00
	<b>(Nil)</b>	: CS □ 01, 03
<b>CSP</b>	<b>04</b>	: CS □ 04
	<b>06</b>	: CS □ 06
		— <b>D</b> : Piping block

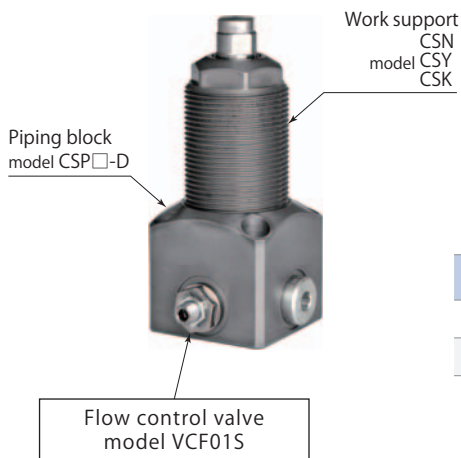
**Work support mounting dimensions**



Flow control valve mounting dimensions



Flow control valve model VCF01S (with coolant cap)



Refer to **page →170** for details.

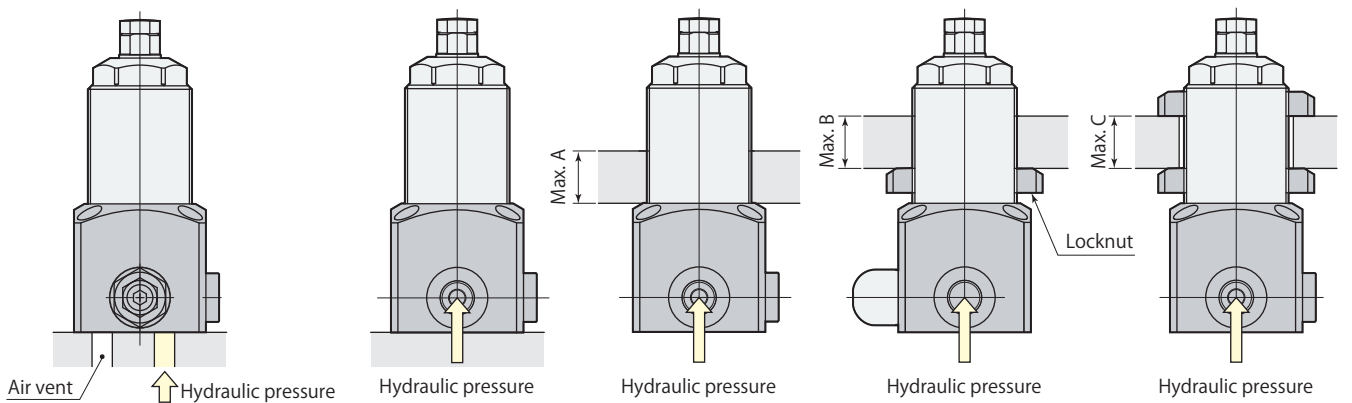
Model	CSP00-D	CSP-D	CSP04-D	CSP06-D
L*	83	69	90	99
Stroke	6.5	6	8	8
Work support models	CSN00 CSY00 CSK00	CSN01 CSY01 CSK01	CSN03 CSY03 CSK03	CSN04 CSY04 CSK04

mm

\* : For model CSK, stroke length shall be added on L.

**Manifold piping example**

**G port piping mounting example**



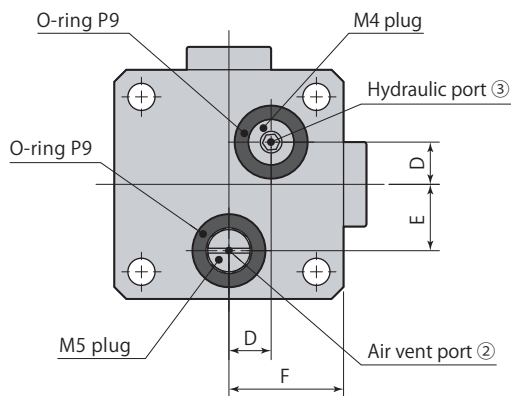
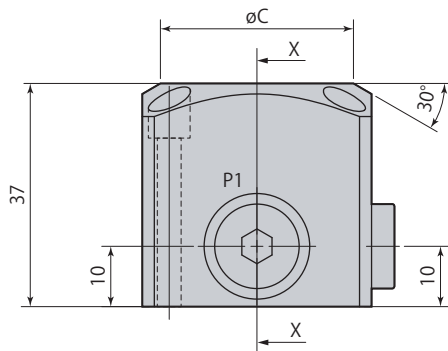
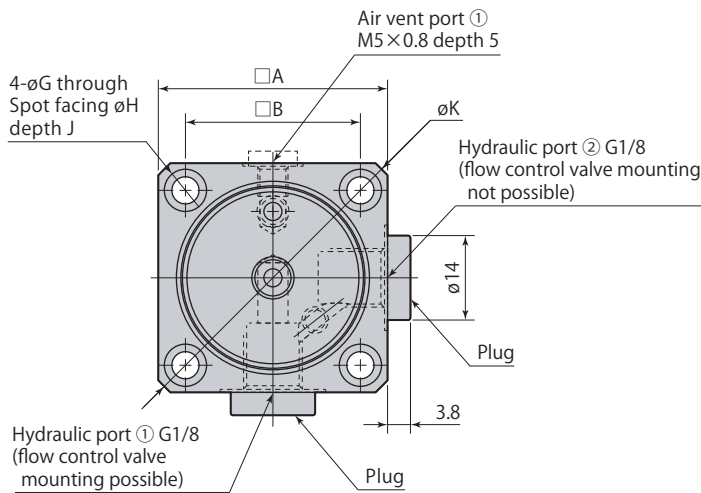
Model	CSP00-D	CSP-D	CSP04-D	CSP06-D
Max. A	27	12	32	37
Max. B	—	—	25	27
Max. C	—	—	18	17
Work support models	CSN00 CSY00 CSK00	CSN01 CSY01 CSK01	CSN03 CSY03 CSK03	CSN04 CSY04 CSK04

mm

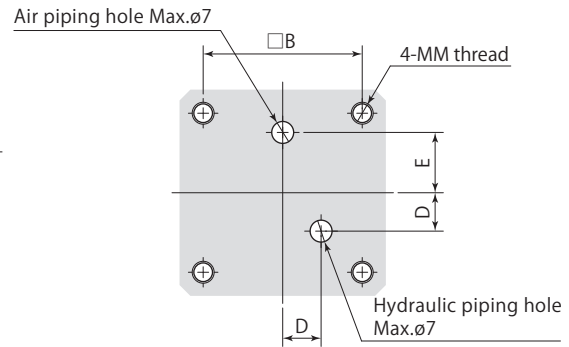
● Locknut is not included.

● Refer to **pages →152** for model CSN, **154** for model CSY, **160** for model CSK and **164, 167** for the dimensions of products that are not listed on this page.

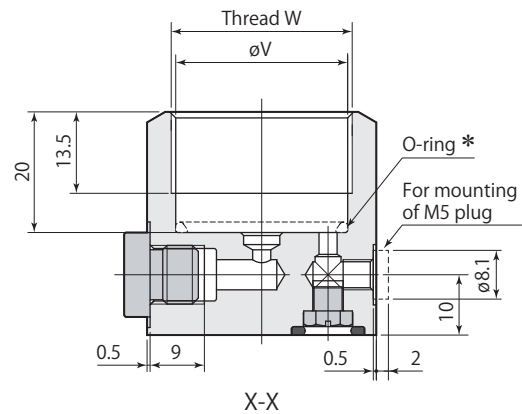
Dimensions



Mounting details



When using for manifold piping, the mounting surface finish must be no rougher than Rz6.3 (ISO4287:1997).

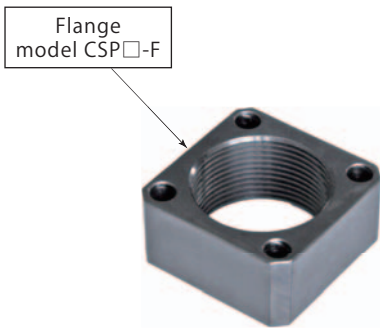


\*: Install O-ring in the same way even when a piping block is used for mounting. The O-ring is included in the package of the work support.

- Material of O-ring is fluorocarbon (with hardness Hs90).
- Mounting screws are not included.
- Provide the piping if there is a risk of coolant or metal chips intrusion from air vent.
- Remove the plug of fitting port to be used when mounting.
- In case of manifold piping, shift M5 plug from air vent port ② on the bottom face to the air vent port ① on side face.
- No flow control valve can be mounted to hydraulic port ②.

	mm			
Model	CSP00-D	CSP-D	CSP04-D	CSP06-D
A	36	38	45	55
B	27	29	34	44
øC	29	32	38	50
D	7	7	9	10
E	9	11	13	16
F	18	19	22.5	27.5
øG	4.5	4.5	5.5	5.5
øH	8	8	9	9
J	9	9	12	12
øK	48	50	60	75
MM	M4×0.7	M4×0.7	M5×0.8	M5×0.8
øV	24.5	28.5	34.5	43.5
W	M26×1.5	M30×1.5	M36×1.5	M45×1.5
Mass	0.26 kg	0.28 kg	0.38 kg	0.58 kg
Body tightening torque	35-45 N·m	40-50 N·m	45-55 N·m	55-65 N·m

Flange



	Size		
<b>CSP</b>	<b>026</b>	: CS □ 00	— <b>F</b> : Flange
	<b>030</b>	: CS □ 01, 03	
	<b>036</b>	: CS □ 04	
	<b>045</b>	: CS □ 06	

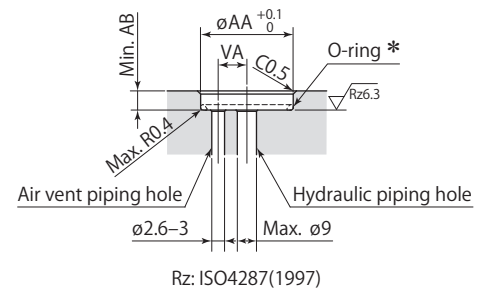
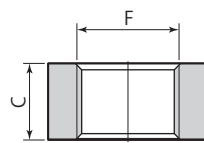
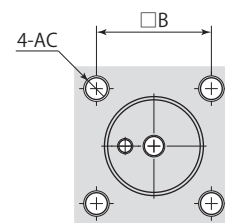
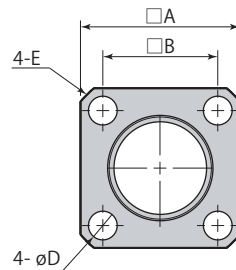
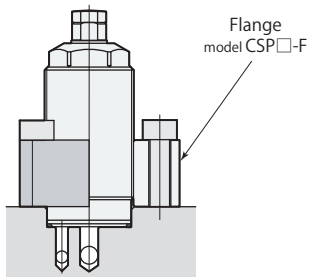
Use a mounting flange when installing with screws.

Dimensions

Mounting details



Work support model CSN, CSY, CSK mounting



\* : Install O-ring in the same way even when a flange is used for mounting.  
The O-ring is included in the package of the work support.

● Mounting screws are not included.

● Refer to **pages →152** for model CSN, **154** for model CSY, **160** for model CSK for the dimensions of products that are not listed on this page.

- ① Mount a flange with screws.
- ② Screw the work support in the flange.

Model	CSP026-F	CSP030-F	CSP036-F	CSP045-F
A	35	40	50	55
B	26	31	40	42
C	17	16	16	18
∅D	5.5	5.5	6.8	9
E	C3	C3	C3	C4
F	M26×1.5	M30×1.5	M36×1.5	M45×1.5
∅AA	24.5	28.5	34.5	43.5
AB	3	3	3	3
AC	M5	M5	M6	M8
VA	9	11	13	16
Mass	0.09 kg	0.11 kg	0.18 kg	0.18 kg

mm