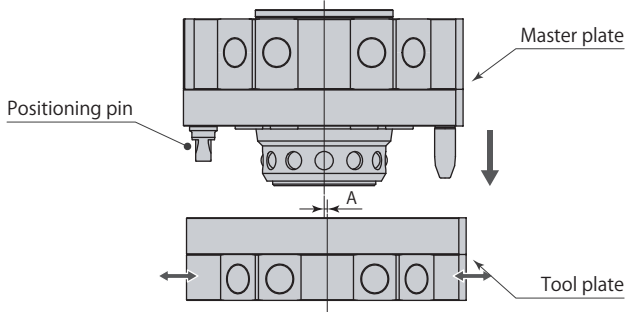


## Configuration conditions

When replacing a tool, please refer to the following guidelines to configure the tool plate.  
Each respective item is shifted independently.

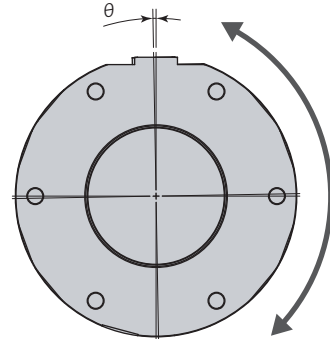
### Allowable eccentricity (A)



Model	RHA / RHB						
	005	010	020	040	080	160	230
Allowable eccentricity A	mm	±0.8	±1	±1.5		±2	

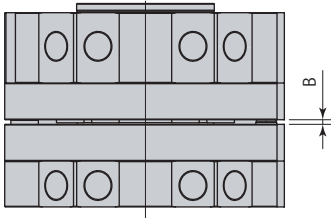
When the master plate approaches, the positioning pin is used for final alignment. The tool plate should not be completely fixed to the tool stand, but should have some margin.

### Allowable turning angle



Model	RHA / RHB						
	005	010	020	040	080	160	230
Allowable turning angle $\theta$	±3°		±2°				

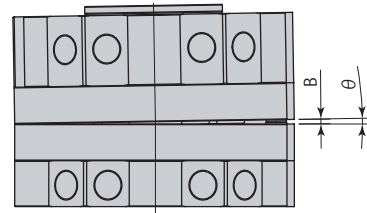
### Allowable clearance (B)



Model	RHA / RHB							
	005	010	020	040	080	160	230	
Lift stroke	mm	0.8		1				
Allowable gap B	mm	Lift stroke + 0.5						

If the clearance is less than the above, pull up the tool plate to lock it. It is not necessary to teach the robot so that both plates are in close contact with each other, but set it as close to the lift amount as possible.

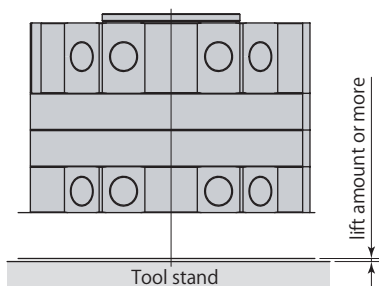
### Allowable slant angle



Model	RHA / RHB							
	005	010	020	040	080	160	230	
Allowable slant angle $\theta$	1.5°	1°	0.9°	0.7°	0.5°	0.4°		
Allowable gap B	mm	Lift stroke + 0.5						

Teach the robot until the allowable tilt is less than the above and less than the allowable clearance (B).

### During separation gap



Model	RHA / RHB						
	005	010	020	040	080	160	230
Lift stroke	mm	0.8		1			

Perform the separation operation with a clearance between the tool stand and the lift amount or more.