

Single acting clamp is controlled and operated with control unit model HCD□H-S and coupling valve model VHD.



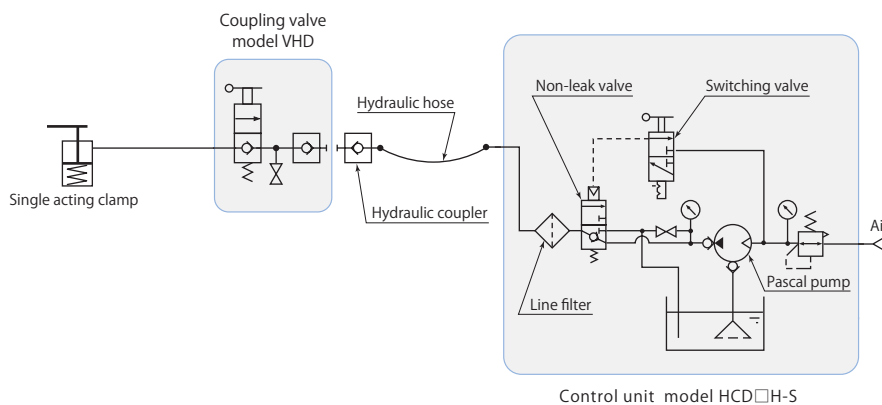
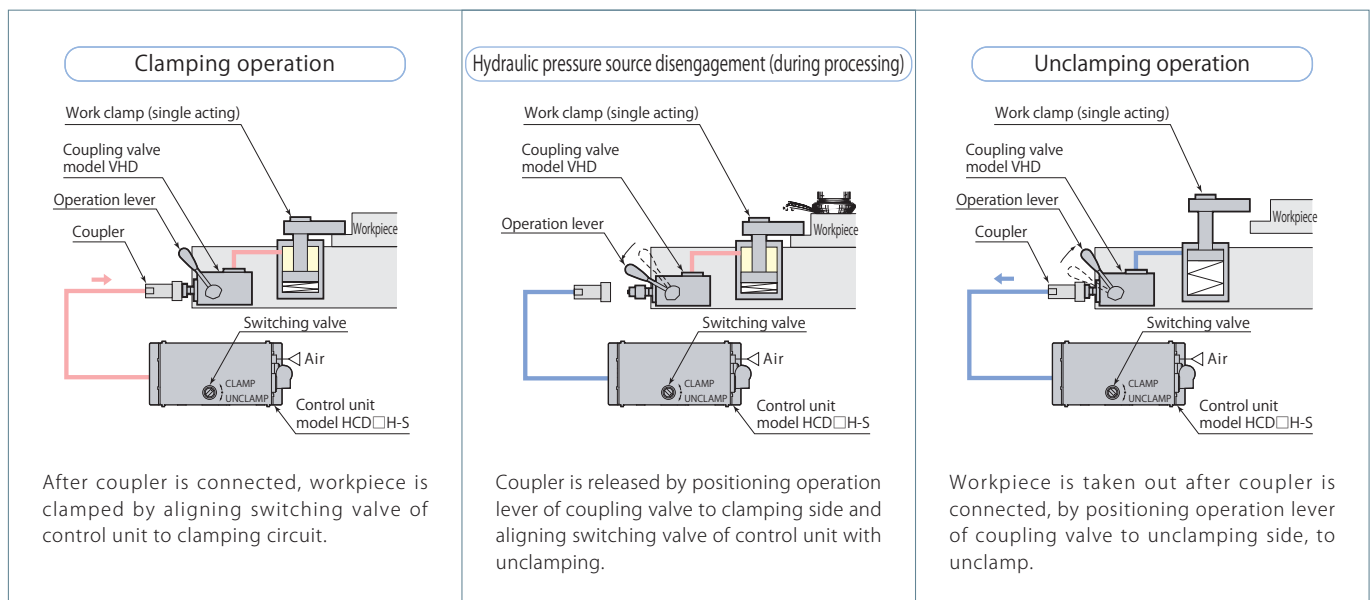
Control unit model **HCD□H-S**
Page →231



Coupling valve model **VHD**
Pages →218, 219

Control unit (HCD□H-S) converts air pressure to hydraulic pressure by actuation of air driven Pascal pump. Once circuit pressure is attained to the set pressure, it stops pumping then keeps the hydraulic pressure.

Coupling valve (VHD) is placed between a control unit and single acting clamps, and it allows to disconnect the control unit from the valve by means of hydraulic coupler. Built-in check valve in coupling valve can positively seal the pressure.



Since Pascal pump does not raise oil temperature like electrical pumps, it does not trigger pressure drop (reduction in clamping force) after clamping due to difference between ambient temperature and oil temperature. Fluctuation of pressure due to changes in ambient temperature, however, does occur. (This fluctuation presents minimal problems with ordinary cutting processes. Inquire for details.)



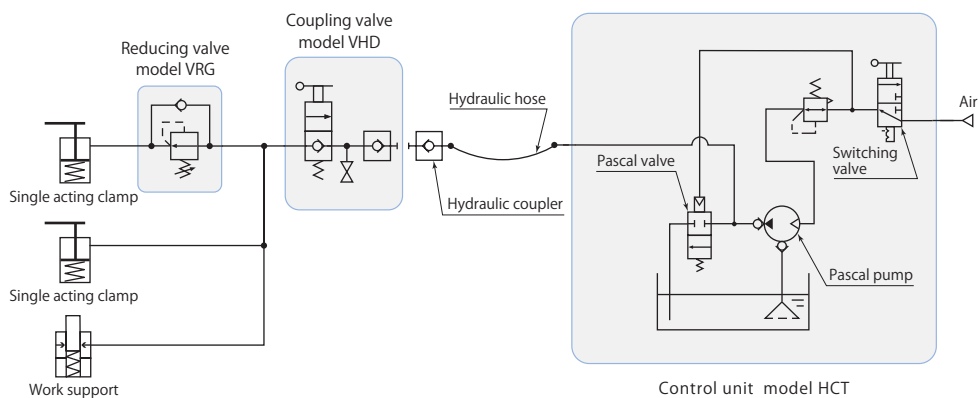
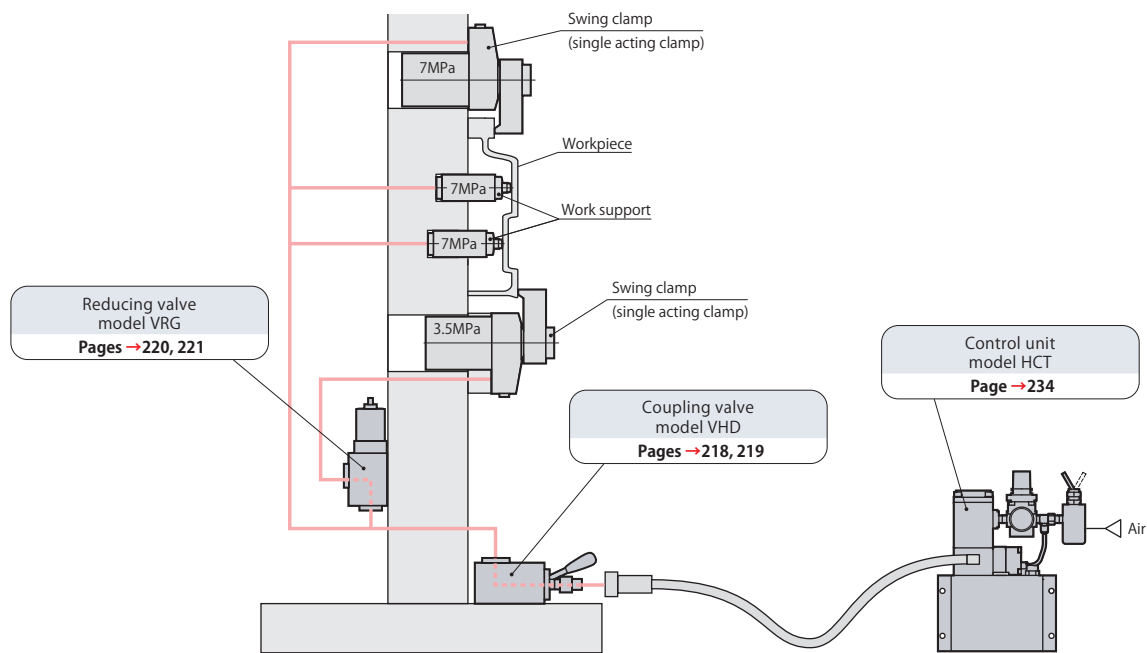
Control unit model **HCT-□**
Page →234



Reducing valve model **VRG**
Pages →220, 221

Compact hydraulic control unit for air drive and manual operations. Control unit (HCT-□) converts air pressure to hydraulic pressure by actuation of air driven Pascal pump. Once circuit pressure is attained to the set pressure, it stops pumping then keeps the hydraulic pressure.

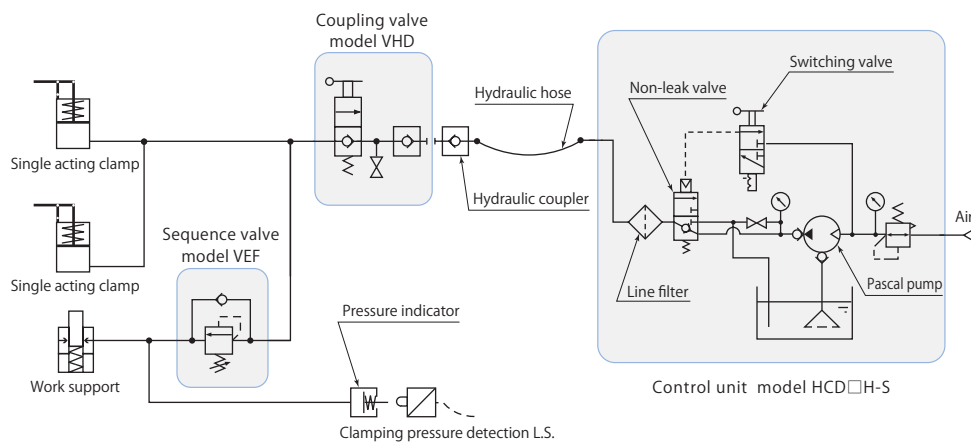
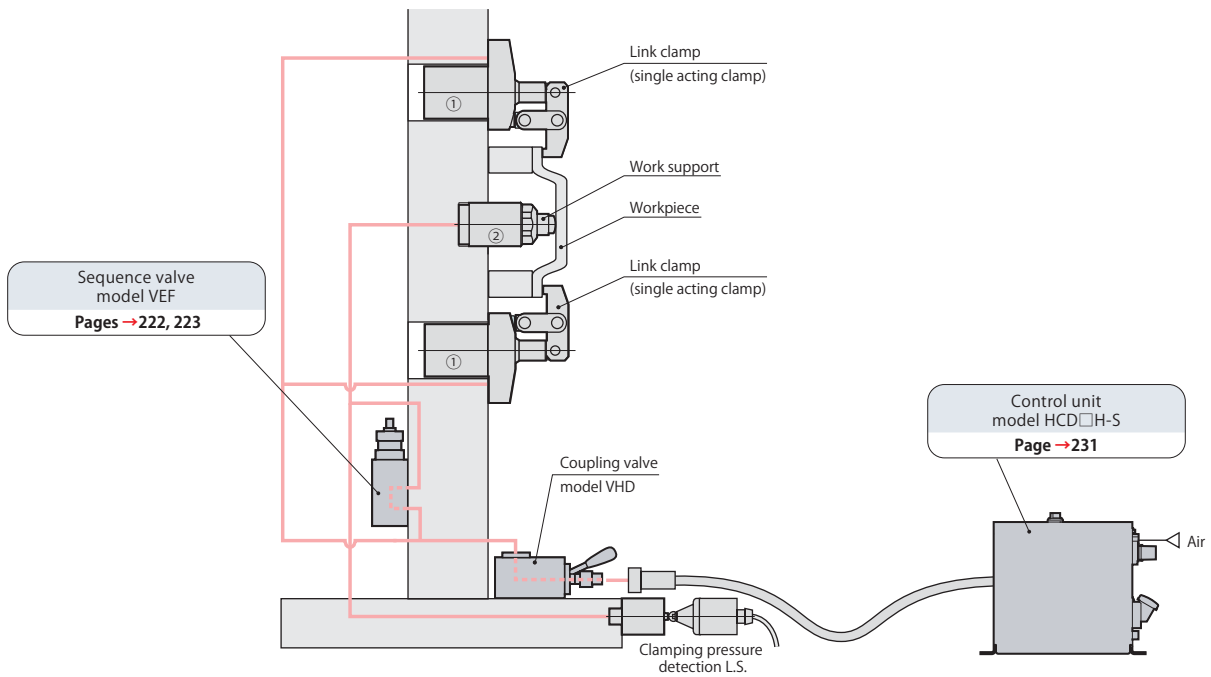
Internal hydraulic pressure of circuit can be partially reduced. (Example) For work support 7 MPa (primary pressure) pressure of work clamp is reduced to 3.5 MPa.





Sequence valve model **VEF**
Pages →222, 223

Clamps are sequentially operated through same circuit.
(Example) ① After clamping operation of work clamp
② Work support operation locked.





Accumulator model **WPB, WPC**
Pages →224–229

After hydraulic pressure source has been disengaged, circuit pressure fluctuation due to temperature changes is suppressed.

