

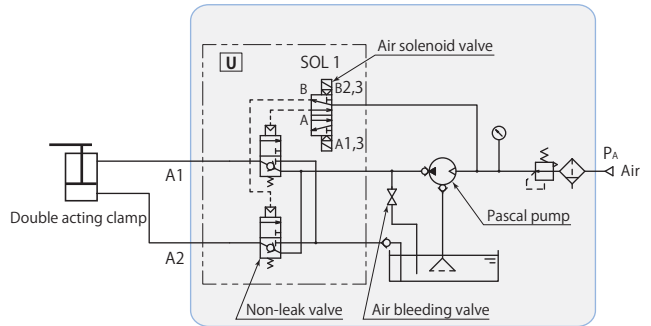


Control unit model **HCS D-H□U**

This is a hydraulic control unit that is air driven and solenoidal operated, combining non-leak valve with non-leak feature (zero oil leaks), which is essential for hydraulic clamps, and Pascal pump. Since two hydraulic circuits can be operated and controlled alternately, it is best suited hydraulic pressure source for double acting clamps.

Pascal pump stops pumping once circuit pressure has been attained and retains the pressure. Furthermore, since there is hardly any temperature fluctuation of working fluid, there is no need for any auxiliary pressure equipment.

HCS D-H□U is made to order.

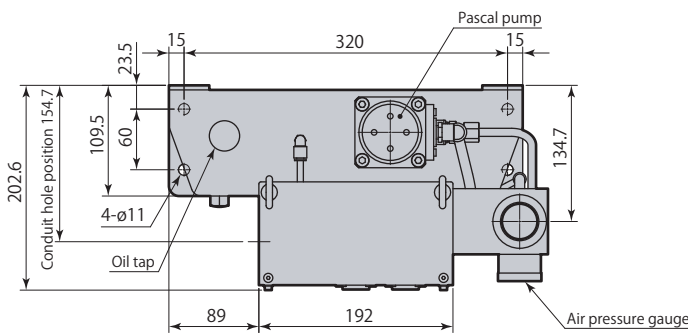


| Model | HCS D-H4U | HCS D-H5U |
|-------------------------------|---|-----------|
| Pascal pump | X6312U-D | X6316U-D |
| Control voltage*1 | DC24V | |
| Discharge oil pressure*2 | MPa 3.6–10.8 | 2.25–6.75 |
| Set air pressure | MPa 0.2–0.5 | |
| Unloaded oil discharge amount | L/min Refer to page →235 for performance diagram. | |
| Tank capacity*3 | L H.L. 3.5 | L.L. 1.5 |
| Operating temperature °C | 0–50 | |
| Fluid used | General mineral based hydraulic oil (ISO-VG32 equivalent) | |
| Mass | kg 20 | |

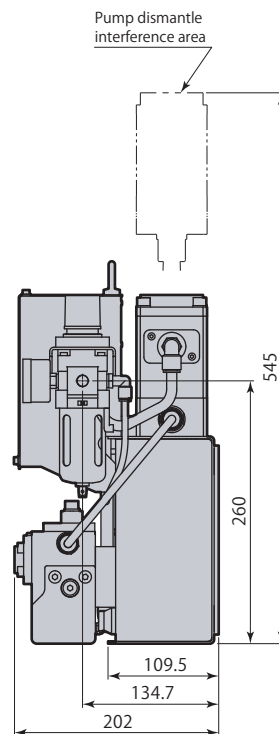
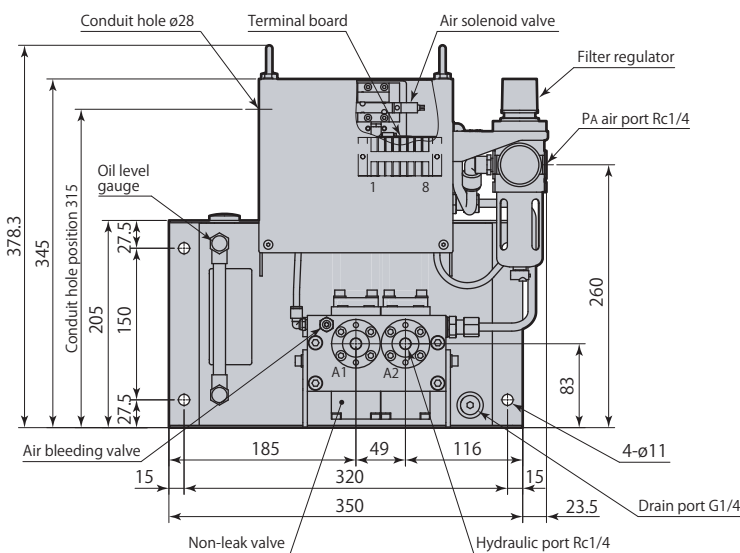
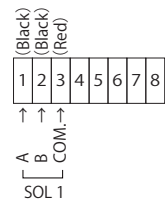
- *1: Ask us if the control voltage is different.
- *2: Ask for consultation on specifications that exceed discharge oil pressure range.
- *3: Oil level in the tank should be always between H.L. and L.L. of the gauge.

Dimensions

HCS D-H□U Double acting circuit control unit



Wiring Diagram



Control unit

HCS Solenoid operated

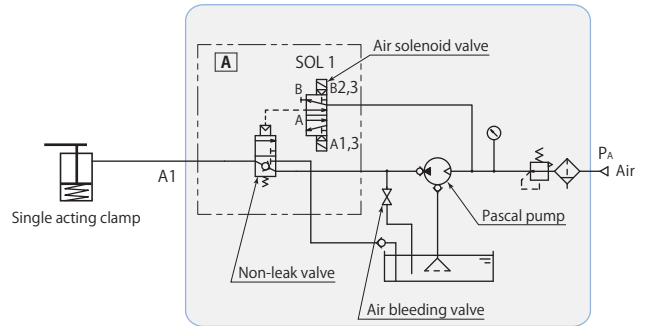


Control unit model **HCS-D-H□A**

This is a hydraulic control unit that is air driven and solenoidal operated, combining non-leak valve with non-leak feature (zero oil leaks), which is essential for hydraulic clamps, and Pascal pump.

Pascal pump stops pumping once circuit pressure has been attained and retains the pressure. Furthermore, since there is hardly any temperature fluctuation of working fluid, there is no need for any auxiliary pressure equipment.

HCS-D-H□A is made to order.

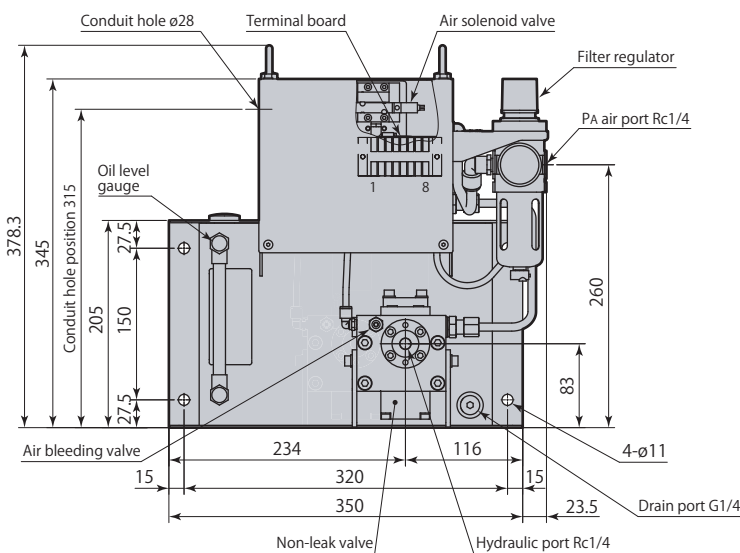
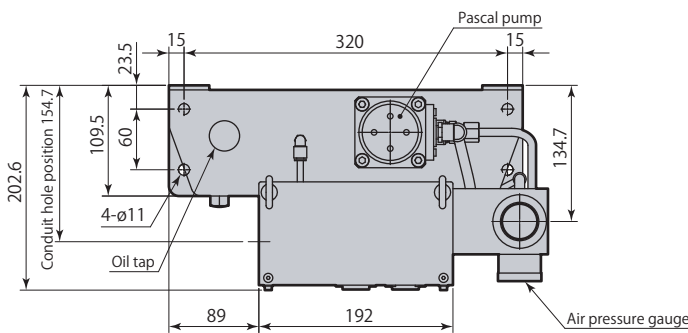


| Model | HCS-D-H4A | HCS-D-H5A |
|-------------------------------|---|-----------|
| Pascal pump | X6312U-D | X6316U-D |
| Control voltage*1 | DC24V | |
| Discharge oil pressure*2 | MPa 3.6–10.8 | 2.25–6.75 |
| Set air pressure | MPa 0.2–0.5 | |
| Unloaded oil discharge amount | L/min Refer to page →235 for performance diagram. | |
| Tank capacity*3 | L H.L. 3.5 | L.L. 1.5 |
| Operating temperature °C | 0–50 | |
| Fluid used | General mineral based hydraulic oil (ISO-VG32 equivalent) | |
| Mass | kg 17 | |

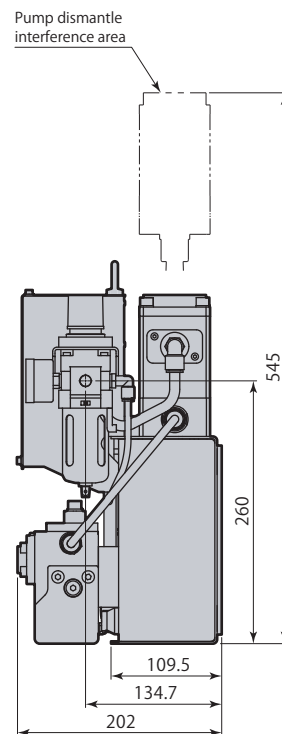
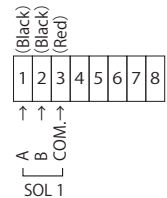
- *1: Ask us if the control voltage is different.
- *2: Ask for consultation on specifications that exceed discharge oil pressure range.
- *3: Oil level in the tank should be always between H.L. and L.L. of the gauge.

Dimensions

HCS-D-H□A Single acting circuit control unit



Wiring Diagram



Control unit
HCS Solenoid operated